

Introducing the new

3M™ Performance Industrial Spray Gun

Engineered for the industrial painter.

The 3M™ Performance Spray Gun is the industrial coating solution that can help reduce variability in your process and boost productivity by giving technicians a smarter way to spray.





Throw down paint like a seasoned pro with a simple, intuitive design.

Lightweight and easy to use, the 3M™ Performance Spray Gun was built with the industrial painter in mind. Made from an advanced impact-resistant composite material, the spray gun is one of the lightest in the industry yet durable enough for the toughest industrial conditions. From the trigger to the body, the spray gun was optimized by kinesiologists to enhance comfort specifically for the high demands of all-day spraying.

With its versatile design, technicians can spray from either a pressurized source or a gravity cup. The pressure-fed hose and nozzles allow for continuous bulk spraying for larger jobs. Or for spot repairs and small areas, convert the spray gun to use the 3M™ PPS™ Series 2.0 Spray Cup System— so you use just the right amount of coating to match the size and finish of the job.

Simple, innovative design means fewer parts to maintain. With quick-change replaceable nozzles, paint never passes through the body of the spray gun. Cleanup can be as simple as wiping the tip of the needle and replacing the head – which means no more disassembling or soaking in solvent. It's like getting a brand new spray gun every time you put on a fresh nozzle. At sizes from 1.1 to 2.0, 3M™ Performance Atomizing Heads allow you to easily spray a wide range of coatings – from stains and primers to topcoats and even adhesives.



Specifications

Air Consumption: 370 SLPM [13 SCFM]

Recommended Air Inlet Pressure: 1.24 Bar [18 psi]

Maximum Operating Temperature: 50 °C [122 °F]

Maximum Operating Overpressure: 10 Bar [145 psi]

Weight: 378 g [13.3 oz]

Air Inlet: 1/4 BSP/NPS

Liquid Inlet: 3/8 BSP/NPS

Nozzle Orifice Sizes: 1.1, 1.4, 1.8



Lightweight and Durable

One of the lightest spray guns in the industry, the impact-resistant composite body is built to withstand demanding industrial environments.



Low Maintenance and Easy

Simple, intuitive design means fewer parts to maintain or rebuild and can help achieve more consistent performance whether you're a beginner or a pro.



Replaceable Nozzles

With quick-change replaceable atomizing heads ranging from 1.1 to 2.0, it's like getting a brand new spray gun with every new nozzle.



Built for Versatility

Sprays a wide range of coatings, including, stains, primers, basecoats, topcoats, clearcoats, and adhesives – from either a pressure-fed system or with 3M™ PPS™ Series 2.0 Spray Cup System.

Spray Gun and Systems

Part No. Components

3M™ Performance Industrial Spray Gun System
26878 Spray gun, air control valve, pressure whip, pressure and gravity atomizing heads, PPS Series 2.0

3M™ Performance Spray Gun
26832 Spray gun and air control valve

Replacement Parts and Accessories

Part No. Product

3M™ Performance Spray Gun

26833 Pressure Whip
26839 Ball Valve
26835 Locking Collar
26840 Rebuild Kit
26834 Whip Pin
26838 Needle

Atomizing Head Refill Kits

Part No.	Color	Size
Pressure		
26811	Yellow	1.1
26814	Orange	1.4
26818	Clear	1.8
26830	Variety Kit	3 sizes (1.1, 1.4, 1.8)
Gravity		
26712	Blue	1.2
26713	Green	1.3
26714	Orange	1.4
26716	Purple	1.6
26718	Clear	1.8
26720	Red	2.0
26730	Variety Kit	6 sizes (1.2, 1.3, 1.4, 1.6, 1.8, 2.0)

Ditch the old systems.

The high-maintenance metal guns that require more fuss than they're worth, the spray cans, the paint brushes and rollers – try the new 3M™ Performance Spray Gun and help bring consistency and quality back into your paint operations.

For industrial/occupational use only.
Not for consumer sale or use.



Introducing the new

3M™ Performance Spray Gun

The Smarter Way to Spray.

The 3M™ Performance Spray Gun was designed specifically to deliver best-in-class performance while saving you time. You'll experience faster cleanup, faster changeovers and faster cycle times. It's the best of 3M Science, all packed into the lightest spray gun in the world.



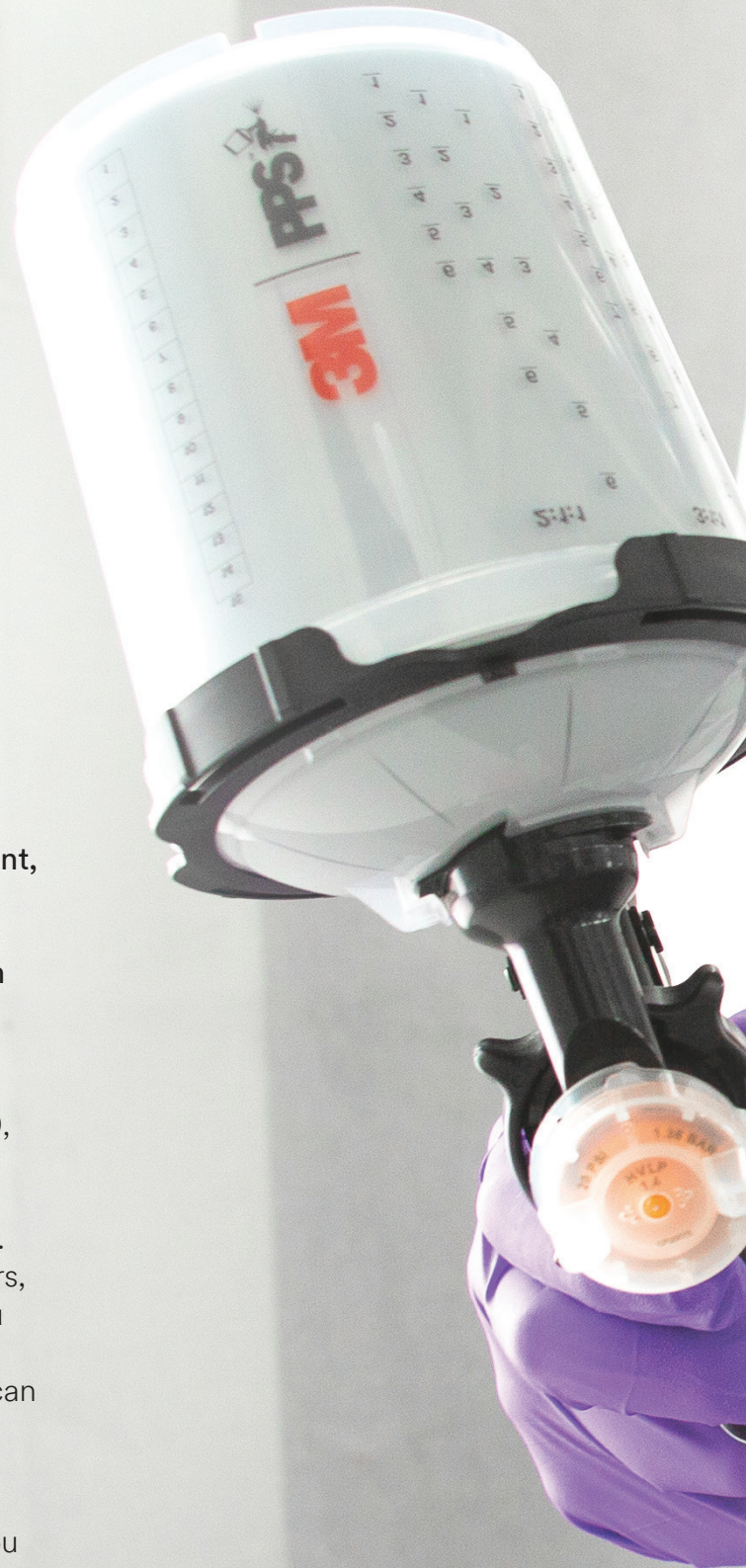


Precision Performance

After 10 years of relentless research and development, we are excited to introduce the 3M™ Performance Spray Gun — a revolution in spray gun technology that delivers top-of-the-line spray performance with unrivaled productivity.

The secret lives inside our advanced interchangeable nozzle technology. In six different sizes from 1.2 to 2.0, each atomizing head is optimized for consistent atomization and superior transfer efficiency — across a full range of high-performance automotive coatings. Spray solid colors, metallics, pearls, clear coats, sealers, and primers with the same premium performance you expect from your best spray gun. And every time you swap out the replaceable nozzle for a fresh one, you can expect like-new spray performance.

Third-party tested and painter approved, the 3M™ Performance Spray Gun is designed to perform, so you can spend less time worrying about your spray gun and more time upping your game.





Faster Cycle Times

Because paint never passes through the body of the spray gun and only through the disposable cup and nozzle, your cleanup and changeover process can be streamlined. No more paint gunking up internal components, no more breaking down your spray gun or soaking in solvent, no more cross contamination putting your job at risk.



Cleans in Seconds

With quick-change replaceable 3M™ Performance Gravity HVLP Atomizing Heads, cleanup is a snap. Simply twist the locking collar, remove the atomizing head and wipe the needle clean. Swap with a new nozzle, and you're ready to spray your next job.



Lightest in the World

Up to 50% lighter than conventional metal spray guns, the advanced impact-resistant, stainless steel-reinforced composite body was optimized by kinesiologist for improved comfort. It's a difference you will see and feel — both in your hand, and in the quality and efficiency of your jobs.

Specifications

Air Consumption: 370 SLPM [13 SCFM]

Recommended Air Inlet Pressure: 1.38 Bar [20 psi]

Maximum Operating Temperature: 50 °C [122 °F]

Maximum Operating Overpressure: 10 Bar [145 psi]

Weight: 238 g [13.3 oz]

Air Inlet: 1/4 BSP/NPS

Nozzle Orifice Sizes: 1.2, 1.3, 1.4, 1.6, 1.8, 2.0

Spray Gun and Systems

Part No.	Components
3M™ Performance Spray Gun System 26778	1 spray gun, 1 air control valve, 1 locking collar, 15 gravity atomizing heads, 1 3M™ PPS™ Series 2.0 mixing cup, 5 lids and liners, 3 sealing plugs
3M™ Performance Spray Gun 26832	Spray gun and air control valve

Replacement Parts and Accessories

Part No.	Product
3M™ Performance Spray Gun 26835	Locking Collar
26840	Rebuild Kit
26838	Needle

HVLP Atomizing Head Refill Kits

Part No.	Color	Size	Quantity
26712	Blue	1.2	5
26713	Green	1.3	5
26714	Orange	1.4	5
26716	Purple	1.6	5
26718	Clear	1.8	5
26720	Red	2.0	5
26730	Variety Kit	6 sizes (1.2, 1.3, 1.4, 1.6, 1.8, 2.0)	6

Guaranteed Trial Order.



If you aren't 100% satisfied, return to 3M for a full refund within 45 days of purchase. No questions asked.

Contact your local 3M representative to get started.



Product Selection and Use: Many factors beyond 3M's control and uniquely within user's knowledge and control can affect the use and performance of a 3M product in a particular application. As a result, customer is solely responsible for proper evaluation (including, but not limited to, fitness for purpose and suitability of application), selection, and use of 3M products. Safety products should always be selected and used in accordance with all applicable regulations and standards (e.g., OSHA, ANSI, and others), after conducting a proper hazard assessment. Failure to properly evaluate, select, and use a 3M product may result in injury, sickness, death, and/or harm to property. Dispose of used atomizing heads, residual paint/coatings, used containers/materials, and PPS in accordance with local regulations.

Introducing the new

3M™ Performance Industrial Spray Gun

Engineered for the industrial painter.

The 3M™ Performance Spray Gun is the industrial coating solution that can help reduce variability in your process and boost productivity by giving technicians a smarter way to spray.



Lightweight and Durable

One of the lightest spray guns in the industry, the impact-resistant composite body is built to withstand demanding industrial environments.



Low Maintenance and Easy

Simple, intuitive design means fewer parts to maintain or rebuild and can help achieve more consistent performance whether you're a beginner or a pro.



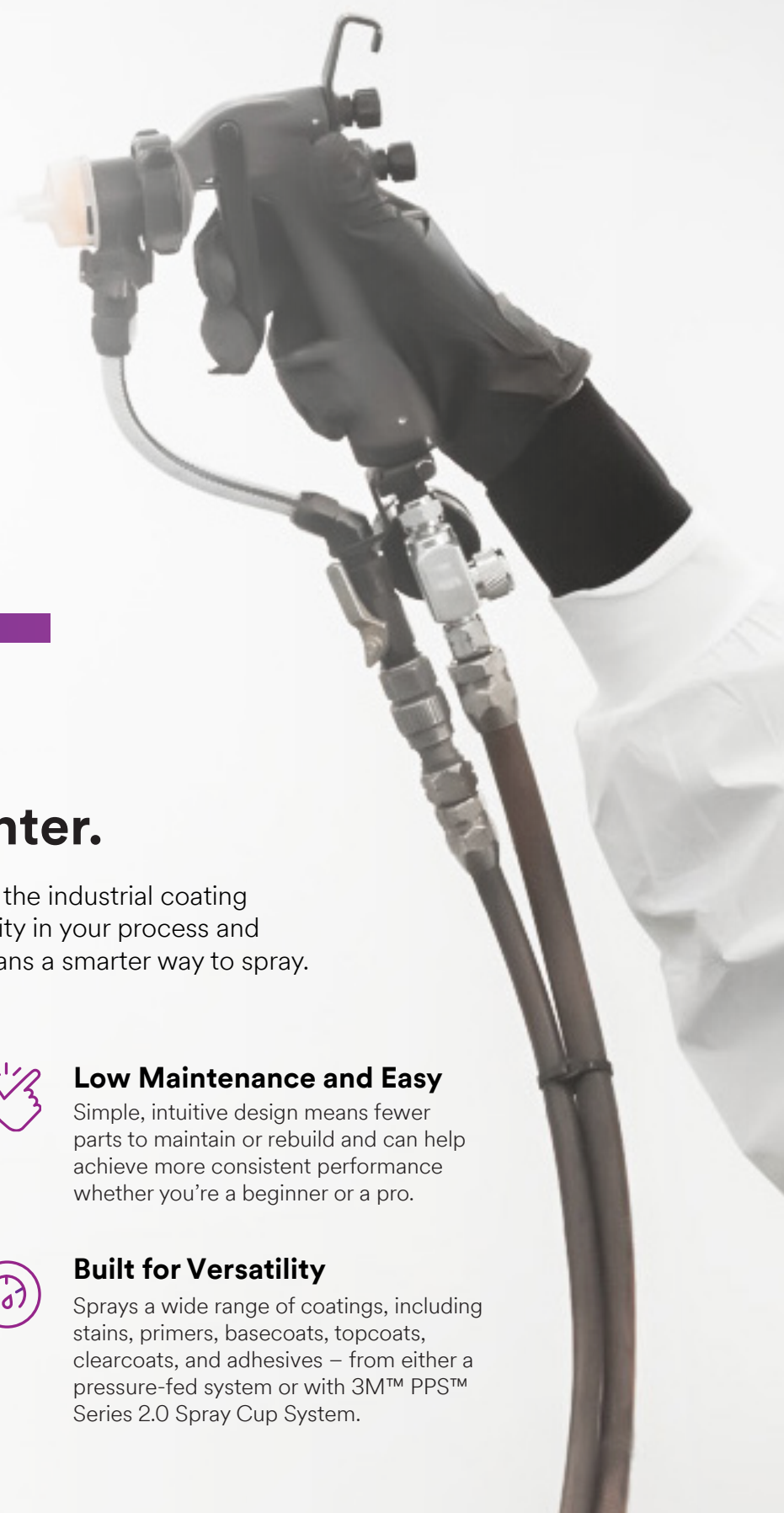
Replaceable Nozzles

With quick-change replaceable atomizing heads ranging from 1.1 to 2.0, it's like getting a brand new spray gun with every new nozzle.



Built for Versatility

Sprays a wide range of coatings, including stains, primers, basecoats, topcoats, clearcoats, and adhesives – from either a pressure-fed system or with 3M™ PPS™ Series 2.0 Spray Cup System.



Spray Gun and Systems

Part No.	Components
3M™ Performance Industrial Spray Gun System 26878	Spray gun, air control valve, pressure whip, pressure and gravity atomizing heads, PPS Series 2.0
3M™ Performance Spray Gun 26832	Spray gun and air control valve

Replacement Parts and Accessories

Part No.	Product
3M™ Performance Spray Gun	
26833	Pressure Whip
26839	Ball Valve
26835	Locking Collar
26840	Rebuild Kit
26834	Whip Pin
26838	Needle

Atomizing Head Refill Kits

Part No.	Color	Size
Pressure		
26811	Yellow	1.1
26814	Orange	1.4
26818	Clear	1.8
26830	Variety Kit	3 sizes (1.1, 1.4, 1.8)
Gravity		
26712	Blue	1.2
26713	Green	1.3
26714	Orange	1.4
26716	Purple	1.6
26718	Clear	1.8
26720	Red	2.0
26730	Variety Kit	6 sizes (1.2, 1.3, 1.4, 1.6, 1.8, 2.0)

Ditch the old systems.

The high-maintenance metal guns that require more fuss than they're worth, the spray cans, the paint brushes and rollers – try the new 3M™ Performance Spray Gun and help bring consistency and quality back into your paint operations.

For industrial/occupational use only.
Not for consumer sale or use.



Product Selection and Use: Many factors beyond 3M's control and uniquely within user's knowledge and control can affect the use and performance of a 3M product in a particular application. As a result, customer is solely responsible for proper evaluation (including, but not limited to, fitness for purpose and suitability of application), selection, and use of 3M products. Safety products should always be selected and used in accordance with all applicable regulations and standards (e.g., OSHA, ANSI, and others), after conducting a proper hazard assessment. Failure to properly evaluate, select, and use a 3M product may result in injury, sickness, death, and/or harm to property.

Introducing the new

3M™ Performance Spray Gun

The Smarter Way to Spray.

The 3M™ Performance Spray Gun was designed specifically to deliver best-in-class performance while saving you time. You'll experience faster cleanup, faster changeovers and faster cycle times. It's the best of 3M Science, all packed into the lightest spray gun in the world.



Precision Performance

Spray solid colors, metallics, pearls, clear coats, sealers, and primers with the high transfer efficiency and atomization you expect from a premium professional spray gun.



Cleans in Seconds

Simply twist the locking collar, remove the atomizing head and wipe the needle clean. Swap with a new nozzle, and you're ready to spray your next job.



Faster Cycle Times

Integrated system with 3M™ PPS™ Series 2.0 Spray Cups and replaceable nozzles means faster changeovers and more time in the zone.



Ultra Lightweight

The advanced impact-resistant, stainless steel-reinforced composite body offers top-tier performance and durability all packed into the lightest spray gun in the world.



Spray Gun and Systems

Part No.	Components
3M™ Performance Spray Gun System 26778	1 spray gun, 1 air control valve, 1 locking collar, 15 gravity atomizing heads, 1 3M™ PPS™ Series 2.0 mixing cup, 5 lids and liners, 3 sealing plugs
3M™ Performance Spray Gun 26832	Spray gun and air control valve

Replacement Parts and Accessories

Part No.	Product
3M™ Performance Spray Gun 26835	Locking Collar
26840	Rebuild Kit
26838	Needle

HVLP Atomizing Head Refill Kits

Part No.	Color	Size	Quantity
26712	Blue	1.2	5
26713	Green	1.3	5
26714	Orange	1.4	5
26716	Purple	1.6	5
26718	Clear	1.8	5
26720	Red	2.0	5
26730	Variety Kit	6 sizes (1.2, 1.3, 1.4, 1.6, 1.8, 2.0)	6

Specifications

Air Consumption: 370 SLPM [13 SCFM]
Recommended Air Inlet Pressure: 1.38 Bar [20 psi]
Maximum Operating Temperature: 50 °C [122 °F]
Maximum Operating Overpressure: 10 Bar [145 psi]
Weight: 238 g [13.3 oz]
Air Inlet: 1/4 BSP/NPS
Nozzle Orifice Sizes: 1.2, 1.3, 1.4, 1.6, 1.8, 2.0

Guaranteed Trial Order.



If you aren't 100% satisfied, return to 3M for a full refund within 45 days of purchase. No questions asked.

Contact your local 3M representative to get started.



Product Selection and Use: Many factors beyond 3M's control and uniquely within user's knowledge and control can affect the use and performance of a 3M product in a particular application. As a result, customer is solely responsible for proper evaluation (including, but not limited to, fitness for purpose and suitability of application), selection, and use of 3M products. Safety products should always be selected and used in accordance with all applicable regulations and standards (e.g., OSHA, ANSI, and others), after conducting a proper hazard assessment. Failure to properly evaluate, select, and use a 3M product may result in injury, sickness, death, and/or harm to property. Dispose of used atomizing heads, residual paint/coatings, used containers/materials, and PPS in accordance with local regulations.

Performance Spray Gun

26778 • 26832 • 26878

Technical Data

April 2020

3M Part Numbers	3M Part Descriptor
26778	3M(TM) Performance Spray Gun System with PPS(TM) 2.0
26832	3M(TM) Performance Spray Gun
26878	3M(TM) Performance Industrial Spray Gun System

Product Description

Lightweight and easy to use, the 3M™ Performance Spray Gun was built for the modern painter. Capable of spraying a wide range of coatings from either a pressure-fed source or attached gravity cup, its impact-resistant composite body makes it one of the lightest spray guns available, yet it is durable enough for demanding industrial and automotive conditions.

With its versatile design, technicians can spray from either a pressure or gravity sources. The pressure-fed hose and nozzles allow for continuous bulk spraying for larger jobs. Or for spot repairs and small areas, convert the spray gun to use the 3M™ PPS™ Series 2.0 Spray Cup System – so you use just the right amount of coating to match the size and finish of the job.

Simple, innovative design means fewer parts to maintain. With quick-change replaceable nozzles, paint never passes through the body of the spray gun. Cleanup can be as simple as wiping the tip of the needle and replacing the head – which means no more disassembling or soaking in solvent.

It's like getting a brand-new spray gun every time you put on a fresh nozzle. At sizes from 1.1 to 2.0, 3M™ Performance Atomizing Heads allow you to easily spray a wide range of coatings – from stains and primers to topcoats and even adhesives. The spray gun's intuitive design means it's ready to help technicians spray right out of the box – whether you're a seasoned pro or if it's your first day on the job.

Product Uses

- 3M™ Performance Spray Gun can be used with a wide variety of sprayable coatings and adhesives.
- The following components are available for use with the Performance Spray Gun

3M™ Performance Spray Gun

26778 • 26832 • 26878

Product Uses, cont.

1 Replacement Parts

Part No.	Product
26833	Pressure Whip
26839	Ball Valve
26835	Locking Collar
26840	Rebuild Kit
26834	Whip Pin
26838	Needle

2 Atomizing Head Refill Kits

Part No.	Color	Size
Pressure		
26811	Yellow	1.1
26814	Orange	1.4
26818	Clear	1.8
26830	Variety Kit	3 sizes (1.1, 1.4, 1.8)
Gravity		
26712	Blue	1.2
26713	Green	1.3
26714	Orange	1.4
26716	Purple	1.6
26718	Clear	1.8
26720	Red	2
26730	Variety Kit	6 sizes (1.2, 1.3, 1.4, 1.6, 1.8, 2.0)

3 3M™ PPS™ Series 2.0 Spray Cup System Kit - PN 26000

(*additional sizes available)

3M™ Performance Spray Gun

26778 • 26832 • 26878

Performance Properties

Performance Spray Gun with Gravity Nozzles	
Air Consumption	370 SLPM [13 SCFM]
Recommended Air Inlet Pressure	1.38 Bar [20 psi]
Maximum Operating Temperature	50 °C [122 °F]
Maximum Operating Overpressure	10 Bar [145 psi]
Weight	238 g [8.4 oz]
Air Inlet	1/4 BSP/NPS
Nozzle Orifice Sizes	1.2, 1.3, 1.4, 1.6, 1.8, 2.0 mm

Performance Spray Gun with Pressure Nozzles	
Air Consumption	370 SLPM [13 SCFM]
Recommended Air Inlet Pressure	1.24 Bar [18 psi]
Maximum Operating Temperature	50 °C [122 °F]
Maximum Operating Overpressure	10 Bar [145 psi]
Weight	378 g [13.3 oz]
Air Inlet	1/4 BSP/NPS
Liquid Inlet	3/8 BSP/NPS
Nozzle Orifice Sizes	1.1, 1.4, 1.8, mm

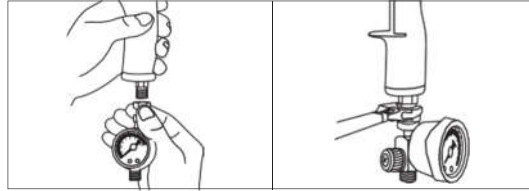
3M™ Performance Spray Gun

26778 • 26832 • 26878

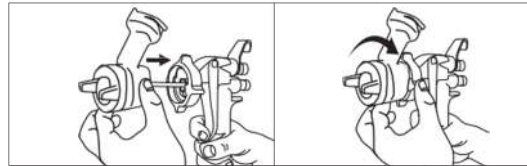
Directions for Use

Gravity Assembly

- 1 Attach the supplied air flow valve to the bottom of the gun.



- 2 Attach the nozzle to the spray gun with the locking collar fully connected.
Note: It is easier to install the nozzle while pulling the trigger backward toward the spray gun handle. To remove the nozzle from the spray gun, reverse the process.



- 3 Attach 3M™ PPS™ Series 2.0 spray cup to nozzle.



- 4 Once the spray gun is properly assembled you may attach the air line

Nozzle Recommendation

*Starting points only, refer to Paint Manufacture for recommendation on fluid tip size

	2.0	1.8	1.6	1.4	1.3	1.2
High Viscosity Coatings	●	●				
Sprayable Fillers	●	●				
High Build Primer		●	●	●		
Primer Surfacer		●	●	●		
Wet on Wet Primer				●	●	
Primer Sealer				●	●	
Direct Gloss				●		
Single Stage Top Coat				●		
Solvent Base Color				●	●	
Clearcoat				●	●	●
Waterborne Base Coat					●	●

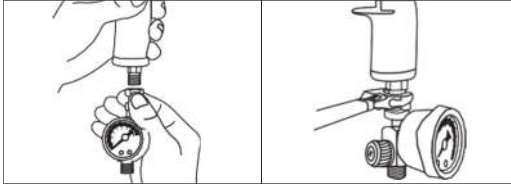
3M™ Performance Spray Gun

26778 • 26832 • 26878

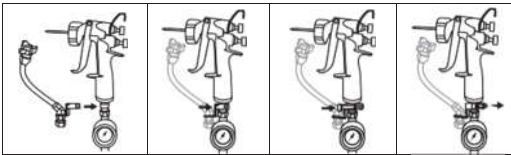
Directions for Use, cont.

Pressure Assembly

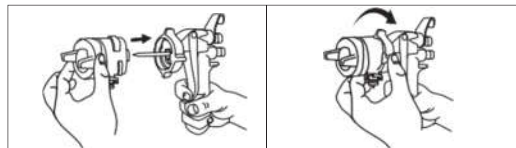
- 1 Attach the supplied air flow valve to the bottom of the gun.



- 2 Attach Fluid Hose Pressure Whip to base of spray gun.



- 3 Attach the nozzle to the spray gun with the locking collar fully connected.
Note: It is easier to install the nozzle while pulling the trigger backward toward the spray gun handle



- 4 Connect Pressure Whip to nozzle.



- 5 Attach fluid and pressure lines from bulk feed system (or pressure pot)
Note: Utilize the optional manual fluid shut-off valve, if desired, between hose whip and fluid supply

Nozzle Recommendation

*Starting points only, refer to Paint Manufacture for recommendation on fluid tip size.

	1.1	1.4	1.8
Textured Paints	●	●	●
1K Top Coats	●	●	
2K Top Coats	●	●	
Base Coat / Single Stage Materials	●		
Clear Coats	●	●	
Epoxy / Urethanes Primers	●	●	●
Adhesives		●	●
Release Agents	●		

3M™ Performance Spray Gun

26778 • 26832 • 26878

Directions for Use, cont.

Cleaning

Pressure

1. Once the system is adequately flushed (pot, lines), depressurize the system (or close the optional fluid valve)
2. After pressure is relieved, remove the hose whip from the nozzle.
3. Remove nozzle from spray gun to clean residue from the nozzle. Rinse out and flush cleaning solvent through the nozzle with fluid tip pointed straight down into receptacle to collect waste solvent.
4. Wipe needle tip. Store spray gun with a nozzle attached to protect the needle.

Gravity

1. Once coating application is complete, disconnect the air hose from the gun.
2. To drain back paint into cup - Invert cup, pull trigger, and tap the PPS™ cup on a table 3 times.
3. Rinse out nozzle spout and flush cleaning solvent through the nozzle by pulling trigger with fluid tip pointed straight down into receptacle to collect waste solvent.
4. Store spray gun with a nozzle attached to protect the needle.

WARNING! Do not immerse spray gun or nozzles in cleaning solvents or gun washers. The maximum operational air pressure of this spray gun is listed on the face of each replacement nozzle

Applications

Primers, Sealers, Basecoats, Clear-Coats, Single-Stage Materials, Adhesives, and more

Storage and Handling

- Ensure equipment is cleaned prior to storage.
- Store spray gun with a nozzle attached to protect the needle.

Precautionary Information

Before using this product, reference and understand the Product Label and Product Manual for Health and Safety Information. Consult all Safety Data Sheets for chemical material used with this product. Follow all federal, state and local regulations for use and disposal of all items/products associated with the use of this product.

3M™ Performance Spray Gun

26778 • 26832 • 26878

Technical Information

The technical information, guidance, and other statements contained in this document or otherwise provided by 3M are based upon records, tests, or experience that 3M believes to be reliable, but the accuracy, completeness, and representative nature of such information is not guaranteed. Such information is intended for people with knowledge and technical skills sufficient to assess and apply their own informed judgment to the information. No license under any 3M or third party intellectual property rights is granted or implied with this information.

Product Selection and Use

Refer to Paint Manufacture for recommendation on fluid tip size refer to your paint company for nozzle tip recommendation.